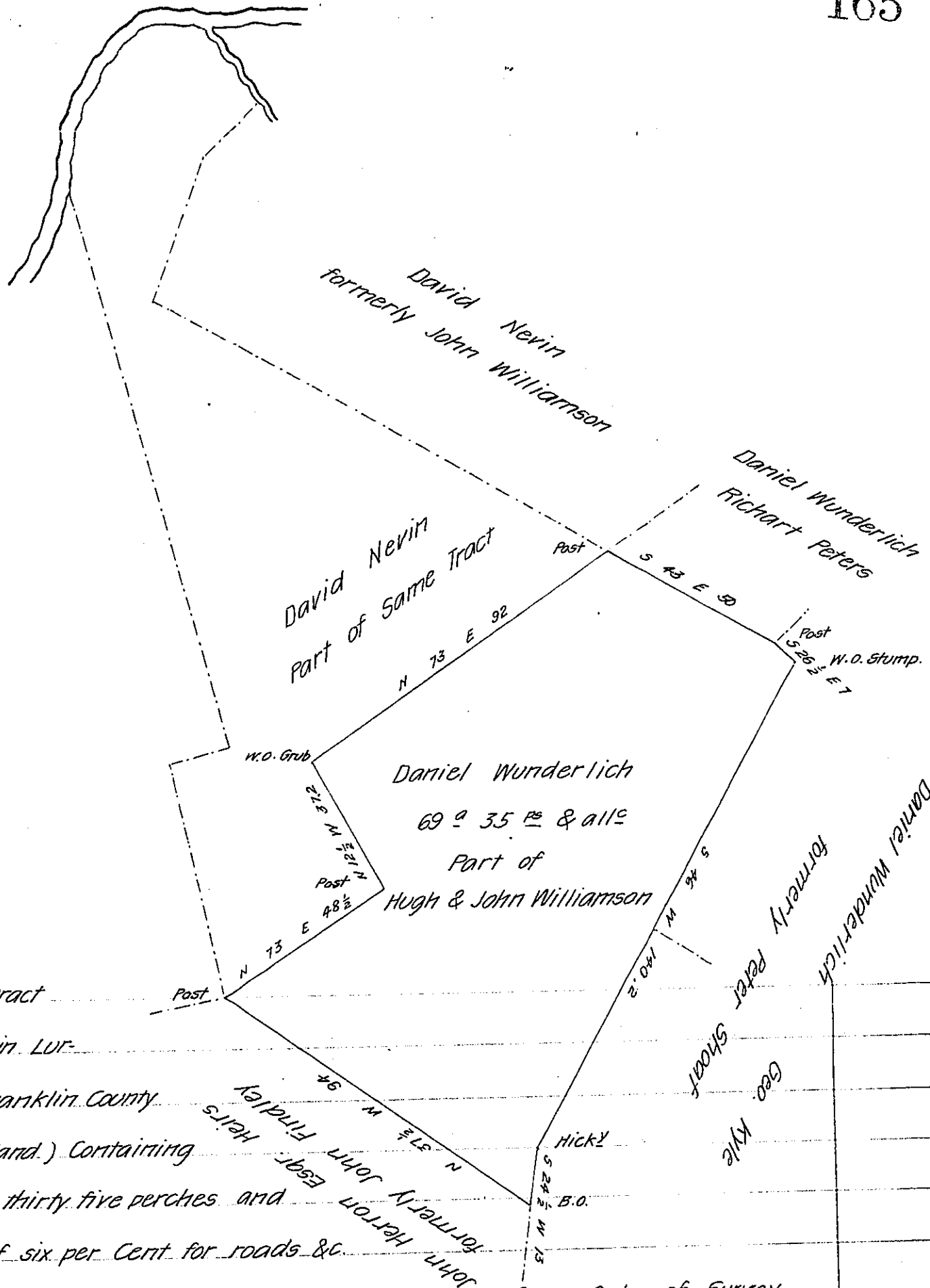


FORM NO 1.



A Draught of a tract  
of land situate in LUF-  
gan Township Franklin County  
(formerly Cumberland.) Containing  
Sixty nine acres thirty five perches and  
the allowance of six per Cent for roads &c.  
being part of 127 a 66 perches surveyed in pursuance of an Order of Survey  
to Hugh & John Williamson dated the 7<sup>th</sup> day of August 1767 No. 4274 The  
above part was divided off the 31<sup>st</sup> day of December 1816 by Archibald Fleming  
late Deputy Surveyor which Survey I have examined & find Correct  
Certified 2<sup>d</sup> March 1839  
To John Taylor Esquire  
Surveyor General of Penn<sup>a</sup>

Sam<sup>l</sup> M. Armstrong

D.S.

IN TESTIMONY that the above is a copy of the original remaining on file in  
the Department of Internal Affairs of Pennsylvania, made  
conformably to an Act of Assembly approved the 16th day of  
February, 1833, I have hereunto set my Hand and caused  
the Seal of said Department to be affixed at Harrisburg,  
this twenty first day of August 1907

*Alvany Wood*  
Secretary of Internal Affairs.